



The 1988 Born Free® President...a time tested concept for energy conservation recreational motoring. The exterior presents a windswept aerodynamic profile to reduce drag and increase gas mileage. Its size makes it respectable in the driveway, easy to park and a dream to drive. Incorporating dual rear wheel Ford chassis, the Born Free® President is snappy and responsive yet smooth and comfortable when in motion. The rich, warm interiors are lavishly furnished in tasteful decors with functional floorplans; the view is spectacular. Born Free® President...the leader in comfortable and satisfying RV living.

Coach Standard Features and Construction

- A national award winning, jet-age styled, molded fiberglass exterior provides rust proof permanence and lasting beauty.
- Three, two inch tubular steel roll bars plus two more in the cabover bed area and two inch tubular steel frame members laminated into the fiberglass roof provide strength and safety.
- As an added safety feature, all counter and table corners are rounded and cabinets have adjustable self-closing hinges.
- Solid wood is fiberglassed between wood and steel cross members in the one piece fiberglass roof, together with aluminum backed fiberglass insulation between 2½" double wall construction provides excellent strength and incorporates a dead air insulation principle.
- The floor is fiberglass both top and bottom on a solid wood core to prevent termites, corrosion and dry rot from road chemicals and moisture.
- Walls and ceiling are covered with cloth with foam backing for additional insulation, wind and road sound-proofing, superb acoustics, easy maintenance, reduction of condensation "sweating", and a cushioning effect for safety, which also further enhances Born Free's cozy luxurious decor.
- Visibility from inside is almost unlimited with huge tinted rear and side windows, plus a dark quadruple tinted panoramic front sky view window.
- Also provided is a pop out window in the rear of the motorhome for emergency use.
- Screens are standard on the entrance door and on jalousie style crankout windows on each side.
- Adjustable 14 x 14" roof vents are lighted and are complete with fans which provide additional fresh air ventilation and lighting.
- The kitchen is so conveniently arranged that getting and preparing food from the refrigerator and pantry, cooking, plus washing dishes and storing them, can virtually be accomplished without moving.
- Solid wood, oak cabinets are standard throughout and no particle board is ever used in a Born Free.
- Dining/seating is in elegant style, and there is a floor plan ideally planned to satisfy your needs. All coach furniture and sofa are Flexsteel's highest quality. Beds are therapeutically correct.
- Mechanically, the Born Free® MotorCoach is engineered to meet or exceed federal and state code requirements with plumbing, heating and electrical installations complying with ANSI Code A119.2.
- The master electrical system is a 45 Amp 115V/12V automatic converter and a battery charger containing all fuses and breaker switches and includes a 30 foot - 30 Amp standard power cord.
- Water and gas lines are located above the floor for easy access and inspection as well as to facilitate freeze resistance.
- Wiring runs through the cabinets under false bottoms for quick access or inspection.
- Born Free® MotorCoach meets or exceeds Recreational Vehicle Industry Association (R.V.I.A.) standards.
- Born Free MotorCoaches are built by teams not in the standard assembly line fashion. This way, quality, craftsmanship and a sense of individual pride goes into each and every Born Free model.
- All Born Free® President MotorCoaches feature a kingsize cabover bed. Furnished with a 66" x 82" mattress of 6" foam, it is covered with matching decor fabric. A convenient reading light is also provided in this area.
- Every Born Free® goes through a factory check out and is put through a water bath to check for leaks. All appliances are activated and checked. Water is placed in holding tanks and checked for leaks. Propane tank is filled and all systems are winterized when delivered in cold weather.
- Unless picked up at the factory, all Born Free's are driven to distribution points instead of being transported. Road testing is your best assurance of a properly functioning unit.

20% Down payment required and is non-refundable due to the customized nature of this order. Prices in effect date of shipment unless down payment and order is accepted by company on quotation basis and company reserves the right of substitution, additions, or design modification without notice or obligation to perform same on previously delivered equipment. All prices are F.O.B. Factory, unless included in quotation, and delivery dates are not guaranteed.

10 YEAR FIBERGLAS/6 YEAR 60,000 MILE

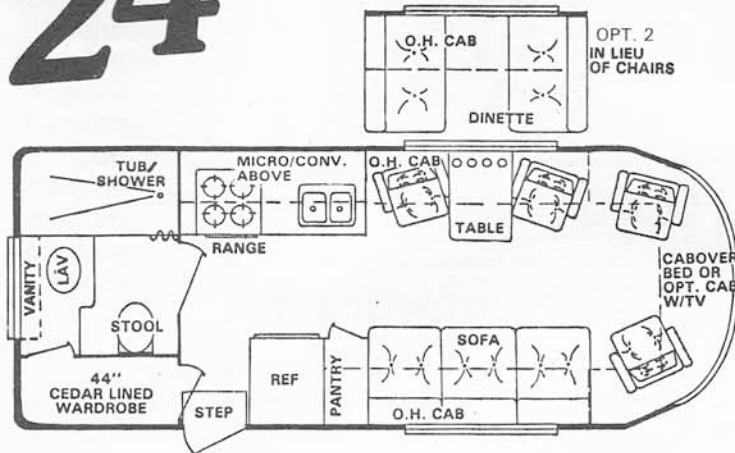
Ford Chassis Standard Equipment

- E-350 11,000# GVW
- 460 V-8 Fuel Injected Engine
- Reduced Sound Exhaust System
- 3:54 to 1 Rear Axle Ratio
- 158" WB (24' Model); 176" WB (26' Model)
- Steel Belted Radial Tires LT215/85R x 16D
- Power Steering, Power Brakes Disc Front
- 3-Speed Cruise-o-Matic Transmission
- 38 Gal. Fuel Tank
- Bucket Seats (Driver & Passenger)
- Heavy Duty Battery; Heavy Duty Springs (Soft Ride)
- Heavy Duty Shocks; Front Stabilizer Bar
- Chrome Front Bumper - Bright Radiator Grille
- Intermittent Wipers, Coach Wiring Harness
- Jack & Lug Wrench
- All Season Coolant
- Color: Colonial White
- 6 Year/60,000 Mile Ford Limited Warranty

Additional Coach Standard Features and Equipment

- Molded Fiberglass/Steel/Solid Wood Construction
- 5 Tubular Steel Roll Bars
- 10 Year Limited Warranty Against Corrosion or Hail Perforation Damage
- Flexsteel "Magic Bed" Sofa and Hi-Back Swivel & Reclining Chairs in Living Area
- Tinted Windows Throughout
- Solid Wood, Oak Cabinetry - Absolutely no particle board used throughout fleet
- Sofa, Dinette, or 2 Executive Flexsteel Chairs Interchangeable on Most Models
- Foam Backed Fabric Lined Walls and Ceiling
- King Size 66" x 82" Cabover Bed with 6" Thick Custom Mattress or Optional Cabover Cabinets (N/C)
- 6 cu. ft. Double Door Dometic Gas/Electric Refrigerator (Electric Start)
- 33 Gal. Fresh Water Tank
- Dual Waste Holding Tanks:
 - 17 to 25 Gal. Waste (Depending on model)
 - 20 to 37 Gal. Gray (Depending on model)
- 37 Gallon (157 lb.) Propane Tank w/Gauge, Regulator, & 80% Shut Off Valve
- 10 Ft. Sewage Hose & Built-in Container
- 45 amp, 115/12 Volt Converter w/Automatic Battery Charger
- 6 Gallon Water Heater w/Visible Inside Bypass Controls (Electric Start)
- 30,000 BTU Thermostatically Controlled Ducted Furnace (Electric Start)
- 12 Volt Automatic Water Pump
- City Water Connection
- Stainless Steel Sink(s) w/Matching Formica Covers
- Optional 2-Burner or 4-Burner Range w/Power Exhaust
- Electric Bar-B-Que Grill Mounted on Steel Slides Standard on 26' Models
- Pull-out Canned Goods Pantry
- Fresh Water Toilet, Tub/Shower, or Shower (Depending on Floor Plan)
- Bathroom Exhaust, Medicine Cabinet
- TV Shelf - Storage and Oak Cabinets Galore
- Venetian Blinds/Drapes and Privacy Drapes
- Safety Rear Pop-out Window
- Flare Kit and Fire Extinguisher

24' Born Free President Floor Plans

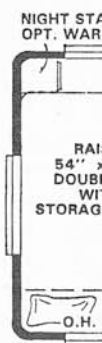


24' PRESIDENT REAR BATH

Elegance, style, comfort, and amenities galore are yours in the Born Free 24' Rear Bath President. Ever since its introduction, this model has stolen the hearts and imagination of America's most discriminating motorhome enthusiasts. Beginning with the bathroom that's a classic example of sheer elegance, then a kitchen that's so conveniently arranged you'll be tempted to duplicate it in your home, plus a living room with furniture you'll always be comfortable in and proud of, and climaxing with a cockpit perfectly arranged for stargazing through the quadruple-tinted panoramic skyview. You'll be the envy of everyone in this beautiful and functional creation. It's our most popular 24' floor plan.

26' Born Free President "Full Timer" Floor Plans

The Born Free 26' President features six functional, yet elegant, floor plans to fit any lifestyle, whether occasional trips or full-time living. They're designed with every convenience and comfort you'll ever want in a motorhome for travel, sleeping, dining and entertaining guests...there's even an electric slide out Bar-B-Que for the master chef.



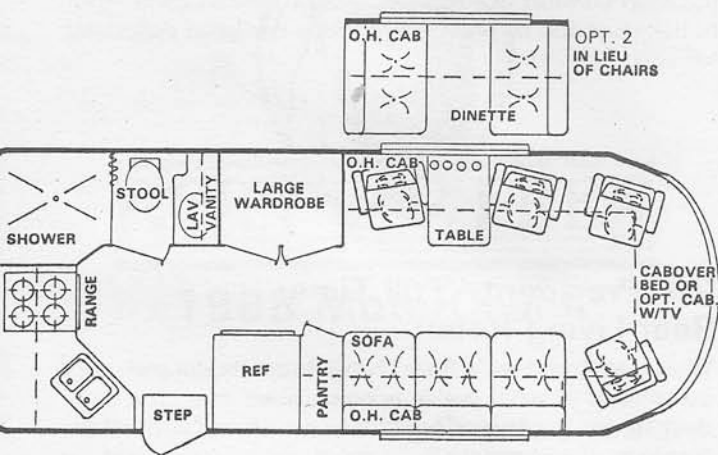
26' P

Choose vacation storage awkward dinette r



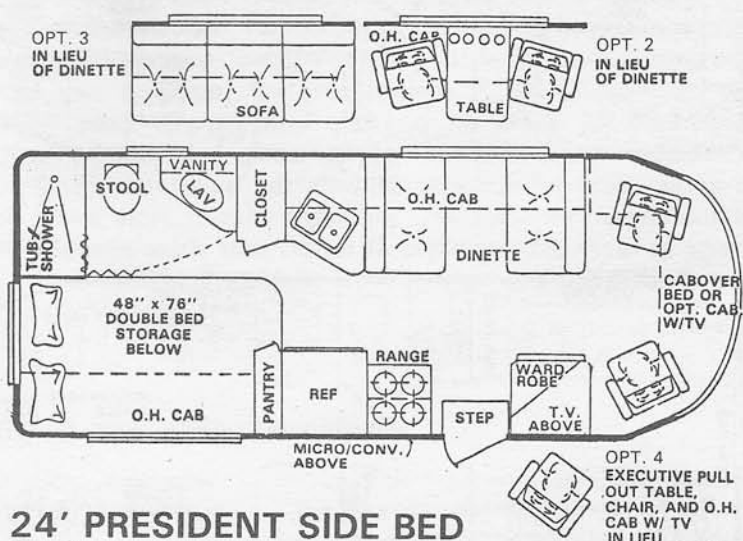
BORN FREE

FORD LIMITED WARRANTY STANDARD



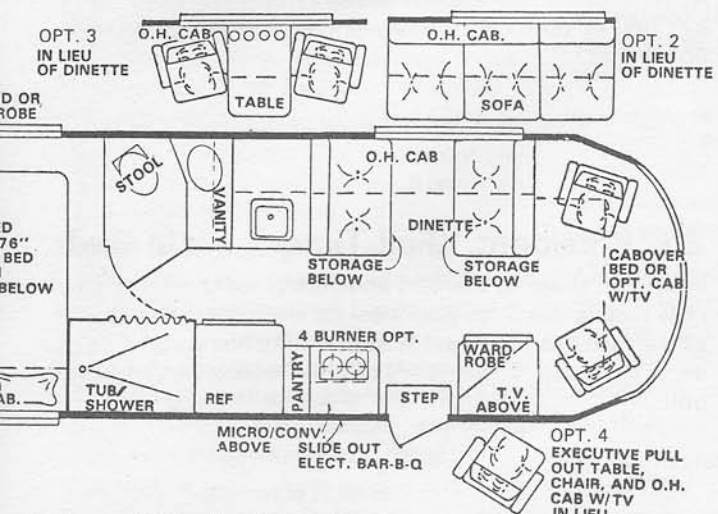
24' PRESIDENT REAR KITCHEN

If you select the 24' Rear Kitchen, then you've picked the model that won the Woodalls/R.V.I.A. National Design Award against 44 other models submitted by competing manufacturers. Yes, the Born Free Rear Kitchen won hands down with every judge voting in its favor on the first ballot at the finals. The Rear Kitchen model features a huge wardrobe/chest of drawers, and is ideal for those wanting the kitchen completely separate from the living quarters — plus the view while cooking or washing dishes makes it seem just like home.



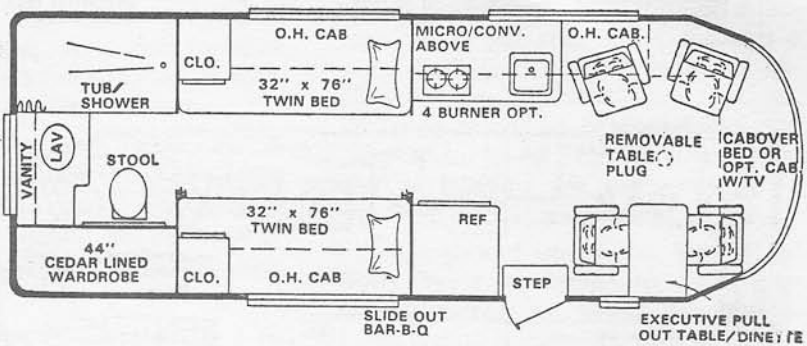
24' PRESIDENT SIDE BED

Popular request for a 24' Born Free Motorhome with a ready-made bed brought this model into our line of RVs. A spacious and elegant bathroom equipped with a tub/shower and decorative parquet wood flooring is adjacent to the superbly comfortable double bed. The kitchen galley is efficiently designed with a minimum of floor space and is convenient to the living room/dining area. Natural lighting and an "open" feeling is created by the panoramic skyview window. A living room atmosphere is created by the built-in TV. A state of quiet enjoyment and comfort makes this model enticing.



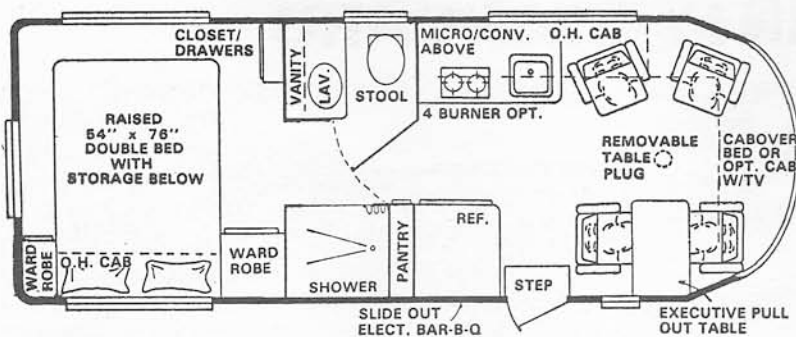
26' President "Full Timer" Rear Bed

Born Free's ultimate top-of-the-line motorhome for extended or full-time RV living. Featuring a rear bedroom with lots of space underneath, it's a "basement model" without the wind catching mess of extended coach height. The split bath and front makes it the ideal "Home on Wheels".



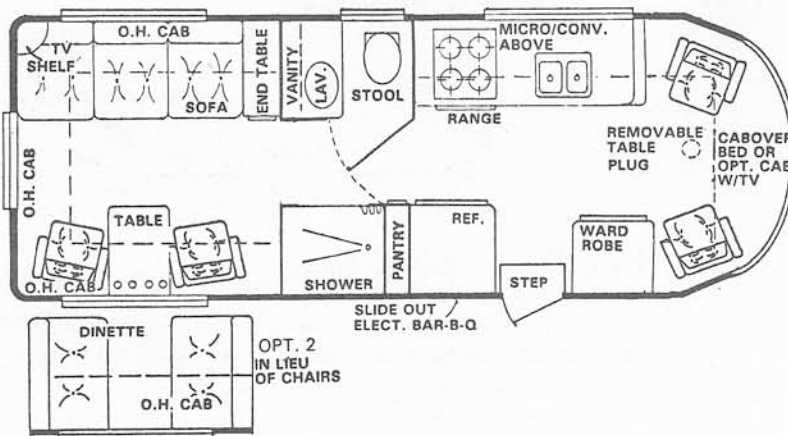
26' President "Full Timer" Rear Bath/Twin Bed

Featured on Family MotorCoach magazine's front cover, this model has got to be the coach that has everything...an elegant bathroom, twin bed sleeping comfort that converts to a dining room and a living room for comfortable seating for four adults while it is also ideal for TV watching with the optional front cabover cabinet and built-in TV, this floor plan will steal the hearts of the most discriminating RV enthusiast.



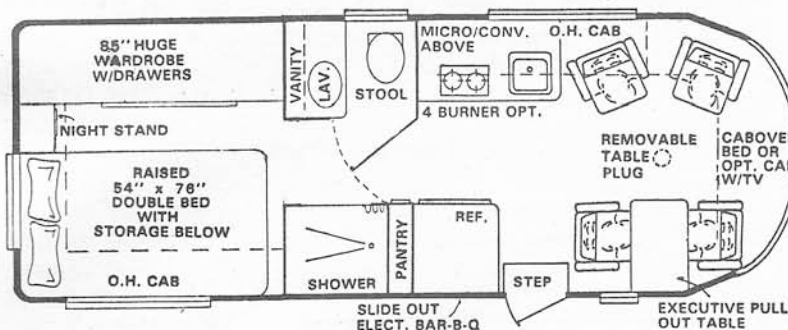
26' President "Full Timer" Island Bed

For those that want a walk-around, full-size bed with a therapeutically-correct interspring mattress, plus the ability to entertain four adults in the front living room in the solid comfort of Flexsteel hi-back captain chairs that both swivel and recline, this model is designed especially for you.



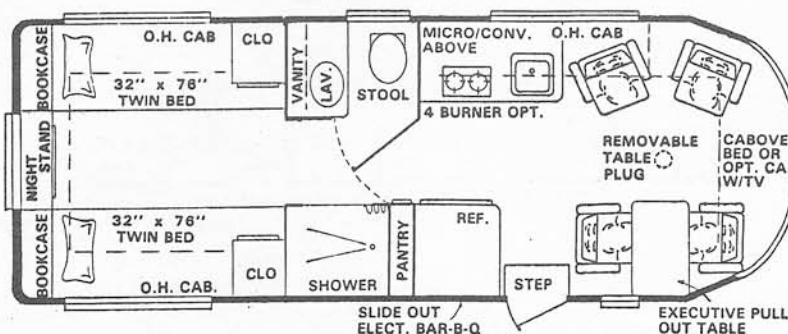
26' President "Full Timer" Rear Living Room

Walk into Born Free's Rear Living Room model and you'll be amazed at what we've accomplished in such a compact space. It's truly a penthouse on wheels with all the comforts of a complete living room, dining room, and / or bedroom at your fingertips. Making the Flexsteel "Magic Sofa" into a bed for two adults is absolutely effortless, and you'll rest in elegant style on the only sofa available that sleeps as well as it sits. The lady will love the extended kitchen with oodles of storage space.



26' President "Full Timer" Side Bed

If you can conceive of a 26' motorhome that features a full-size rear bed with a huge 85'' sliding door wardrobe complete with drawers and mirrors, then you'll really appreciate Born Free's 26' Full Timer Side Bed floor plan. All 26' models also come standard with a king-size 66'' x 82'' bed or optional oak cabinet w/TV shelf at no additional cost.



26' President "Full Timer" Twin Bed

Individual sleeping comfort and convenient bathroom access makes this floor plan ideal for the couple that wants all the facilities of a Class A motorhome but wants to stay away from the "bus driver's phobia" common to a larger unit.





1988 Born Free President

MODEL

	FOB Factory Base Price	Factory Direct Owner/Agent Base Price
BORN FREE 24 ft. "President" Includes Flexsteel Coach Furniture	\$47,315	\$37,850
(Rear Bath) BF24RB		
(Rear Kitchen) BF24RK		
(Side Bed) BF24SB		
BORN FREE 26 ft. "President Full Timer" Includes Flexsteel Coach Furniture . . .	\$51,685	\$41,350
(Rear Bed) BF26DB		
(Rear Bath/Twin Bed) BF26RB-T		
(Island Bed) BF26IB		
(Rear Living Room) BF26RLR		
(Side Bed) BF26SB		
(Twin Bed) BF26RTB		

CUSTOMER PREFERRED EQUIPMENT PACKAGE A (All Items Listed Below Included) \$6,705

- Ford Factory Dash Air, Tinted Glass
- Super Cooling Engine
- Tilt Steering
- Cruise Control
- Aux. Battery w/ Isolator
- Ford Cassette Option
- 2 Factory Installed Rear Speakers
- Flexsteel Front Captain Chairs -Swivel & Recline
- Firestone Air Ride Suspension System
- Front Fiberglass Spoiler
- Winegard Omni TV Antenna
- 12V Roof Exhaust 3-Speed w/ Automatic Shut Off and Reversible Direction
- Steel Reinforced Roof for A/C and Wiring
- Systems Monitoring Panel
- Generator Compartment and Factory Wiring for Generator to 45 amp Converter
- Zap Electronic Odor Control System
- Automatic Step-Lighted & Electric
- Microwave/ Convection Oven
- 13" Color TV w/ Remote Control
- Deluxe Fiberglass Cab Running Boards
- Stainless Steel Wheel Liners and Hub Covers
- Splash Guards
- Rack & Ladder
- H.D. Hitch with Ball
- Trailer Plug
- Extended Mirrors
- Chassis Undercoating

CHECK (✓) OPTION PREFERRED

- ☐ Two Burner Cooktop
- ☐ Four Burner Range w/ Oven
- ☐ Single Stainless Steel Sink
- ☐ Double Stainless Steel Sink
- ☐ Linoleum/ Carpeting
- ☐ Wall-to-Wall Carpeting
- ☐ Parquet Wood Flooring/ Carpeting

Interior Color Selection _____

Floor Plan _____

ADDITIONAL OPTIONS AVAILABLE (Contact Factory For Current Prices)

- 7.3 Liter Diesel w/ Super Sound Lead Barrier & 3rd Battery _____
- 40 Channel Modular CB _____
- Roof Mounted Storage Compartment _____
- 13,500 Roof Mounted A/C w/ Heat _____
- 4,000 watt Generator - Gas _____
- 4,000 watt Generator - Propane _____
- Custom-Built Awning _____
- Custom-Made Super Sleeping Bag w/ Removable Sheets for Cabover Bed _____
- Drag Rollers _____

20% Down Payment required and is non-refundable due to the customized nature of this order. Prices in effect date of shipment unless accepted as firm with customer down payment. Company reserves the right of substitution, additions, or design modification without notice or obligation to perform same on previously delivered equipment. All prices are F.O.B. Factory, unless included in quotation, and delivery dates are not guaranteed.

BORN FREE MOTORCOACH, INC.
Highway 169 North, Humboldt, IA 50548
Toll Free, 1-800-247-1835
In Iowa, 515-332-3755