

310 SERIES PORCELAIN TOILET

Revolutionary Technology and Matchless Quality

Trouble Free Operation and Residential Appeal

- European styling
- White or bone finish
- Power flush, swirl-jet bowl rinse action ensures a cleaner rinse
- Innovative drop away ball and valve system
- Full-size, residential-style seat
- Two-bolt installation with quick-access water connection
- Hands-free foot pedal operation with adjustable water level
- Easy serviceability with modular components
- Available with optional wood seat
- Dometic's Two-Year Protection Plus warranty



Model 310 Standard Seat Height

Color: White
Weight: 26 lbs.
Seat Height: 18 inches



Model 311 Short Seat Height

Color: White
Weight: 24 lbs.
Seat Height: 13.875 inches



 **Dometic**

310 SERIES PORCELAIN TOILET

Specifications

Porcelain Toilets

DOMETIC 310 STANDARD HEIGHT

ORDER NO.

302310011	Single Pack	White
302310013	Single Pack	Bone
302310041	Pallet Pack (12)	White
302310043	Pallet Pack (12)	Bone

DOMETIC 310 STANDARD HEIGHT WITH HAND SPRAY

ORDER NO.

302310111	Single Pack	White
302310113	Single Pack	Bone
302310141	Pallet Pack (12)	White
302310143	Pallet Pack (12)	Bone

DOMETIC 310 STANDARD HEIGHT WOOD SEAT

ORDER NO.

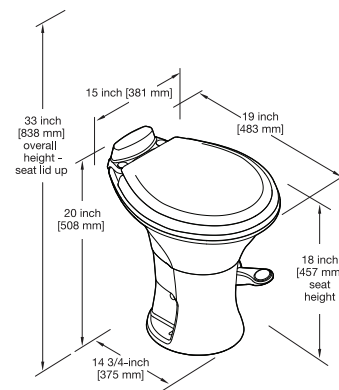
302310021	Single Pack	White
302310023	Single Pack	Bone
302310051	Pallet Pack (12)	White
302310053	Pallet Pack (12)	Bone

DOMETIC 310 STANDARD HEIGHT WOOD SEAT WITH HAND SPRAY

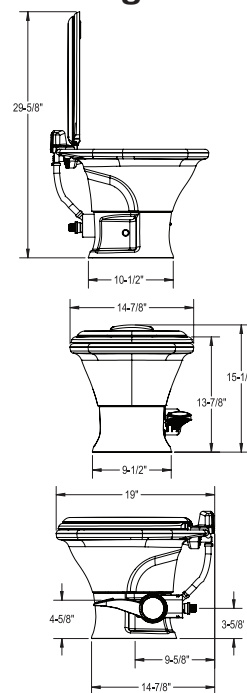
ORDER NO.

302310121	Single Pack	White
302310123	Single Pack	Bone
302310151	Pallet Pack (12)	White
302310153	Pallet Pack (12)	Bone

Model 310 Standard Height



Model 311 Short Height



DOMETIC 311 SHORT HEIGHT

ORDER NO.

302311611	Single Pack	White
302311613	Single Pack	Bone
302311641	Pallet Pack (12)	White
302311643	Pallet Pack (12)	Bone

DOMETIC 311 SHORT HEIGHT WITH HAND SPRAY

ORDER NO.

302311711	Single Pack	White
302311713	Single Pack	Bone
302311741	Pallet Pack (12)	White
302311743	Pallet Pack (12)	Bone

DOMETIC 311 SHORT HEIGHT WOOD SEAT

ORDER NO.

302311621	Single Pack	White
302311623	Single Pack	Bone
302311651	Pallet Pack (12)	White
302311653	Pallet Pack (12)	Bone

DOMETIC 311 SHORT HEIGHT WOOD SEAT WITH HAND SPRAY

ORDER NO.

302311721	Single Pack	White
302311723	Single Pack	Bone
302311751	Pallet Pack (12)	White
302311753	Pallet Pack (12)	Bone

 Dometic