



2015



Spirit

Elegance, style, comfort, and amenities galore are yours in the Born Free Spirit. Since its introduction, this model has stolen the hearts and imagination of America's most discriminating motorcoach enthusiasts. Beginning with the bathroom that's a classic example of sheer elegance, a kitchen that's so conveniently arranged you'll be tempted to duplicate it in your home, plus a living room with furniture you'll always be comfortable in and proud of. You'll be the envy of everyone in this beautiful and functional creation. It's our most popular 24' floor plan, and is now available with either the queen size cabover bed, or oak entertainment center/TV option.



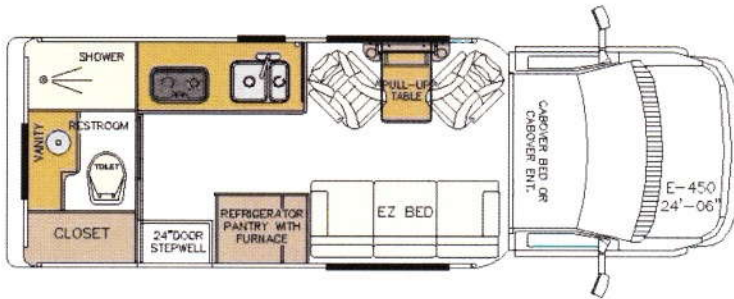
Born Free RV
1505 13th St. N.
Humboldt, Iowa 50548
www.bornfreerv.com
800-247-1835

2015 Born Free Spirit

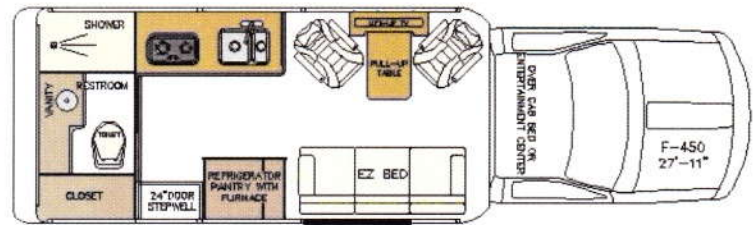
E Series Chassis Floorplans

F Series Chassis Floorplans

SPRIT/REAR BATH



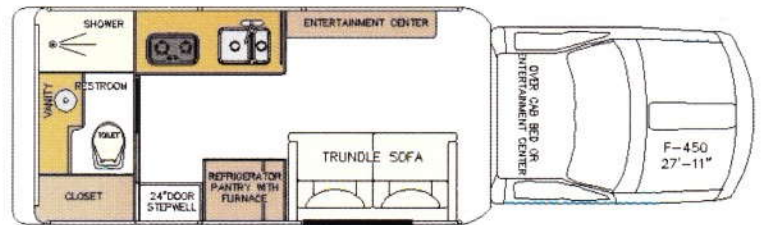
SPRIT/ REAR BATH
F-SERIES



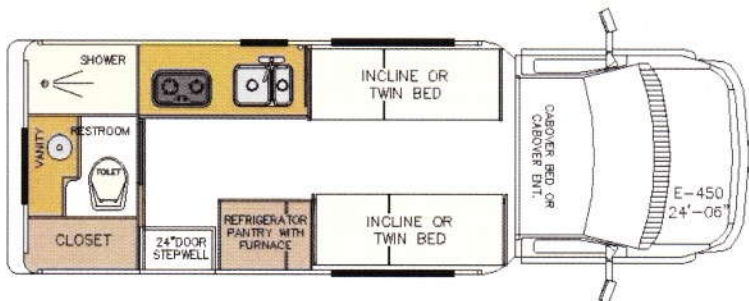
SPRIT/REAR BATH



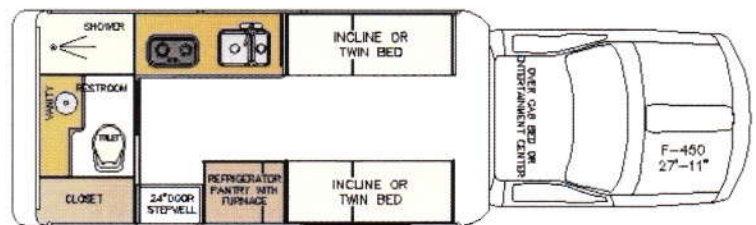
SPRIT/ REAR BATH
F-SERIES



SPRIT/REAR BATH



SPRIT/ REAR BATH
F-SERIES



The Born Free Difference

- 4.0KW Cummins Onan Gasoline Generator
- Cab Touchscreen AM/FM/DVD/CD Receiver with Bluetooth
- Rand McNally Navigation and Back Up Camera
- 15K BTU Ducted Roof Air
- Electric Awning w/Remote Light
- Premium LED TV
- 2nd Gen On-Demand Tankless LPG Water Heater
- Tubular Steel Rollbars
- Dera Ceramic Style Tile Flooring
- Sliding Bathroom Door
- Coach Entrance Door with Remote Keyless Entry
- Keypad Access and Gas Shock
- Firefly Fully Dimmable Lighting System
- Premium Shower Faucet and Mixer
- Memory Foam Cab-over Bed
- 2,000 Watt Outback Under-Floor Inverter
- Smart Plug Shoreline
- Kenyon SilKEN 2 Induction Cook Top

Warranties

- Ford 36 Mo./36,000 Mile Bumper-to-Bumper Ltd.
- 10 Yr. Fiberglass Warranty Against Corrosion or Hail Perforation



E Series Chassis Features

- Keyless/Remote Entry
- Daytime Running Lights
- Heavy Duty Alternator
- Passenger Airbag Shutoff Switch
- Dash Electronic Message Center
- Cloth Flexsteel Captain's Chairs w/Power lumbar
- Power Windows and Door Locks
- 6-Way Power Driver's Seat
- Heated Power Mirrors
- Rearview Mirror w/Compass and Temperature
- Cruise Control
- Auxiliary Start
- Stainless Steel Tailpipe Extension
- 4-Wheel Disc ABS
- Tow Package with 12 Volt Plug
- Super Spring Suspension Upgrade

F Series Chassis Features

- Keyless/Remote Entry
- Keyless Entry Pad
- Daytime Running Lights
- Heavy Duty Alternator
- Passenger Airbag Shutoff Switch
- Dash Electronic Message Center
- Rearview Mirror
- Power Windows and Door Locks
- 6 Way Power Driver Seat
- Adjustable Pedals
- Cruise Control
- Auxiliary Start
- Stainless Steel Tailpipe Extension
- 4-Wheel Power Disc Brakes with ABS
- Tow Packages with 12 Volt Plug
- 4 Upfitter Switches
- Integrated Trailer Brake Controller
- Front Stabilizer Bar
- Traction Control System
- Aluminum Wheels
- Borg Valve Stem Extenders

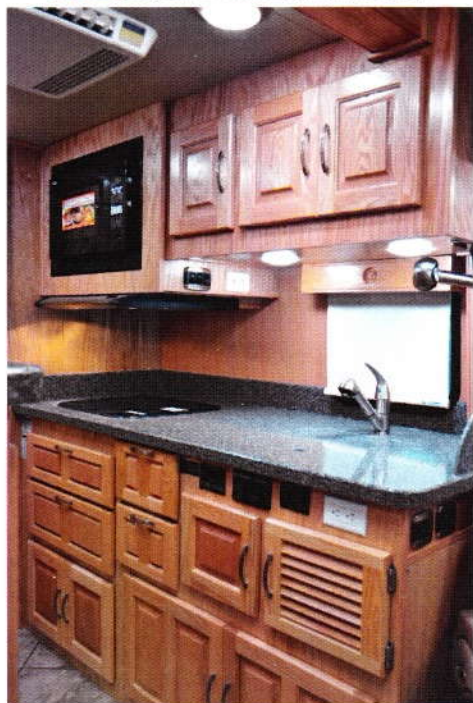
2015 Born Free Spirit

Interior Coach Features

- Raised Panel Hardwood Cabinetry w/ Real Wood Edge Banding
- Solid Surface Countertops
- Tile Backsplash
- Double Bowl Undermount Stainless Steel Kitchen Sink
- Undermount Stainless Steel Bathroom Sink
- Brushed Nickel Fixtures
- Exterior Vented Range Hood
- 7 Cubic Foot 120 V/LPG Refrigerator with Freezer
- Microwave/Convection Oven
- 30,000 BTU LP Furnace with Digital Thermostat
- Fantastic Fan in Bathroom and Living Room
- LED Interior Lighting
- Porcelain Toilet
- Shower Soap Dispenser
- Non-slip Step Well
- Front Privacy Curtain
- Electronic Day/Night Shades

Exterior Coach Features

- Molded Fiberglass Body
- Fiberglass Floor with Plywood Core
- Fiberglass Running Boards
- All LED Body Lighting
- Rear Ladder & Roof Rack
- Exterior Shower
- Black Tank Flush System
- Garnet Non-Intrusive Tank Probes
- Sewer Hose
- Water Hose
- Cable TV Connection
- TV Antenna w/ Signal Booster
- 2 Deep Cycle Coach Batteries on Pull-Out Service Tray
- Exterior 110V Outlet
- Tinted Thermo Paned Frameless Windows
- Lighted Entrance Door Handle
- Generator Fuel Shutoff Valve
- Inverter/Battery Disconnect



2015 Born Free Spirit

Options

Floorplan

- Nose Cone: Bed/Entertainment Center/Storage
- Living Room Layout (see spec sheet for choices)

Chassis

- F450 XLT Chassis—6.8L V-10 Gas (upgrade to wide body—add 26" length)
- F450 XLT Chassis—6.7 Power Stroke V8 Turbo Diesel (upgrade to wide body -add 26" length)
- F550 XLT Chassis—6.8L V-10 Gas (upgrade to wide body—add 26" length)
- F550 XLT Chassis—6.7 L Power Stroke V8 Turbo Diesel (upgrade to wide body—add 26" length)

Cab Amenities

- Satellite Radio Adapter
- CB Radio
- Side view Cameras
- Tire Pressure Monitors
- Mobileye Collision Avoidance

Drivetrain

- 4 wheel drive (*F Series Only*)

Leveling System

- HWH Hydraulic Straight Jacks

Comfort

- Heated Cab Seats (*E Series Only*)
- Center Seat/Console (*F Series Only*)
- Heated Floor

Suspension

- Bilstein Shocks
- Safe-T-Plus Stabilization System
- MOR/Ryde Suspension System
- Liquid Springs Suspension

Awning

- Driver's Side Living Room
- Driver's Side Living Room & Kitchen

Cabinetry

- Oak or Alder w/Raised Panel Doors (Standard)
- Hickory w/ Raised Panel Doors
- Cherry w/ Raised Panel Doors
- Walnut w/Raised Panel Doors
- Cedar Lining in Wardrobe
- Mission Style Cabinets & Hardware

Options Continued...

Interior Design Package

- Prairie
- Horizon
- Vermillion

Connectivity

- Firefly iPad Electronic Interface

Power

- 3.6 KW Cummins Onan LPG
- 6.0 KW Cummins Diesel w/Slide Mount
- EC30 Auto Generator Start
- *Solar Package

Entertainment

- 40" HD LED TV (Entertainment Center Only)
- Winegard Stationary Satellite
- Kingdome in Motion Satellite

Furniture Upgrade to Ultra Leather

- Captain's Chair (*E Series*)
- Coach Chairs
- Sofa Bed
- Double Trundle
- Captain's Chairs (*F Series*)
- Center Seat/Console (*F Series*)

Exterior

- Full Body Paint
- Rear Wall Mounted Spare Tire
- Borg Valve Stem Extenders (*E Series*)
- Front Bumper Step
- Rear Bumper Step
- Bug Deflector

Plumbing

- Heated Tanks and Dump Valves
- Water Filtration System
- *Propane Cooktop
- *A/C—LP Tank Style Water Heater

*Options recommended for frequent dry camping

